



**SOS**

**ALUMINUM Mill**

Cumming, Georgia

25" Mill

Roll Alignment, Motor Alignment

9/9/99

SOS# GA9999

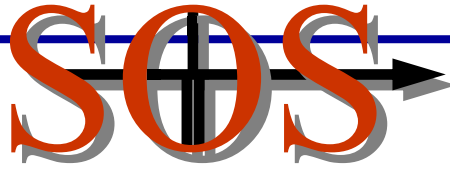
PO# 99999

800-638-8936

212 Trexler Lane

Rock Hill, SC 29732

**STRAIGHTLINE OPTICAL SERVICES INC.**



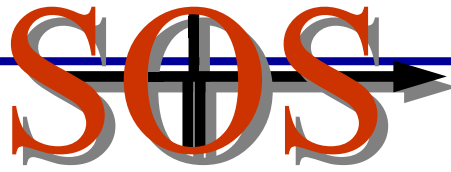
## ALUMINUM MILL

## CUMMING, GEORGIA

<b>PO#:</b>	99999
<b>SOS#:</b>	GA9999
<b>SERVICE REQUESTED BY:</b>	Gary Christopher
<b>CONTACT PERSON:</b>	Gary Christopher
<b>MACHINE:</b>	25" Mill
<b>SECTION(S):</b>	Roll Alignment/ Motor Inspection
<b>DATE STARTED:</b>	9/9/99
<b>DATE FINISHED:</b>	9/9/99
<b>ESTIMATED TIME:</b>	8 Hours
<b>ACTUAL TIME:</b>	8 Hours
<b>SOS TECHNICIANS:</b>	Gary Christopher/ Mike Bennett
<b>MECHANICS PERFORMING WORK:</b>	Plant

### REASON FOR SERVICE:

- ◆ Laser inspection of Un-coiler motor following front bearing change.
- ◆ Alignment of Deflector Roll, optical inspection of Vidimon Roll and Billy Roll.

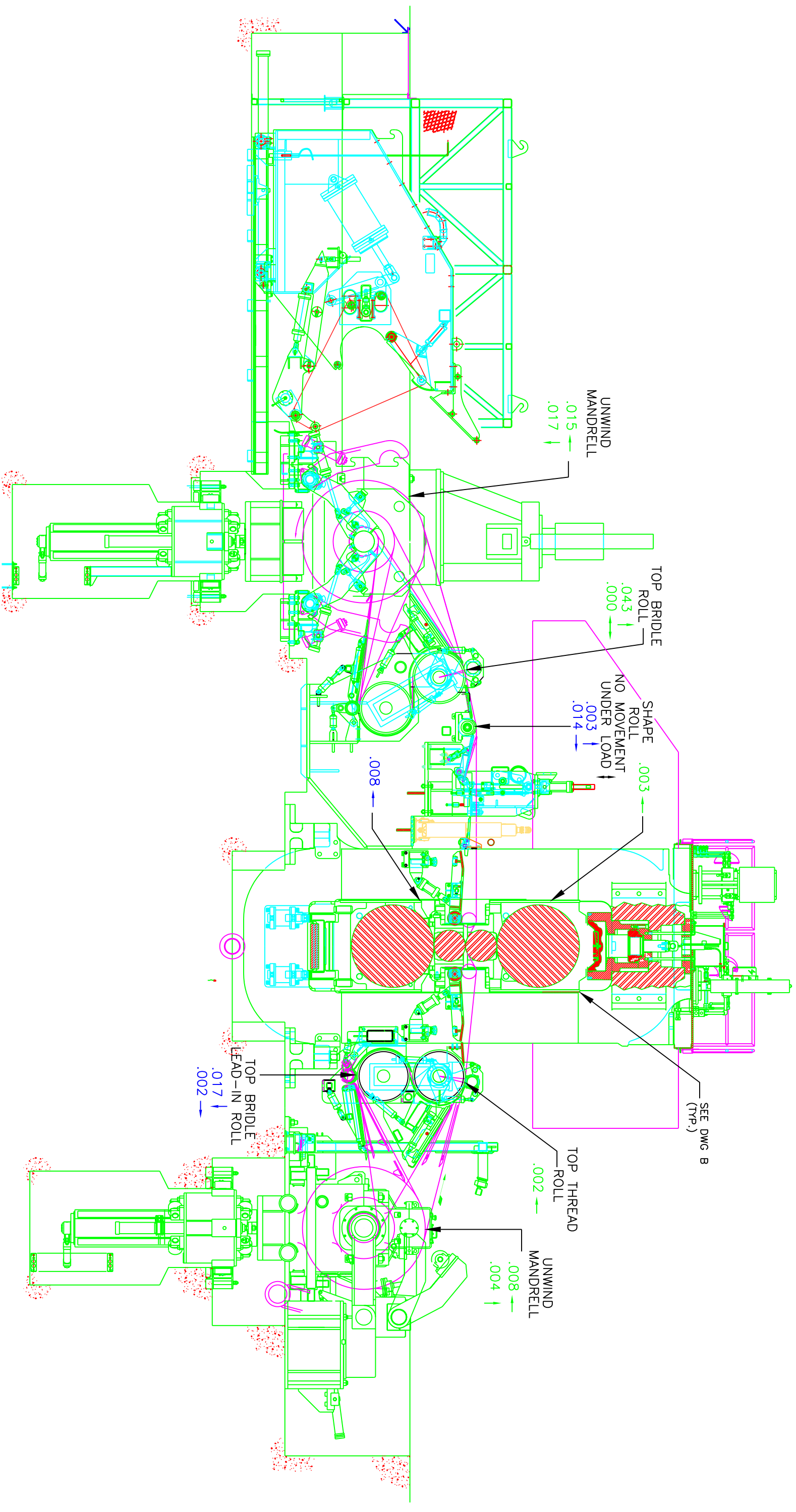


## **ALIGNMENT:**

- ◆ SOS worked under the direction of Mr. Spencer Owens.
- ◆ SOS was instructed to assist the mill with the alignment of the Deflector Roll. The Datum for the inspection was the machined surface in the work roll window and gravity level. The Deflector Roll was aligned to be within .004", both vertically and horizontally.
- ◆ SOS then inspected the alignment of the Vidimon Roll and the Billy roll. The alignment of the Vidimon roll was found to be acceptable to the mill; however, the Billy Roll was found .060" out of alignment, which was unacceptable. This roll was corrected to be within .004".
- ◆ SOS inspected the alignment of the Un-coiler motor. The inspection was performed using laser alignment. The alignment of the motor was found to be out of the maximum tolerance specified by the industry standards pre-programmed in the lasers computer. No corrections were made during the time SOS was in the mill; however, the mill was in the process of making the corrections before the end of the outage.

## **RECOMMENDATIONS:**

- ◆ SOS feels that the mill should continue it's optical inspections and alignment on the 25" Mill during outages that include roll changes to ensure that correct alignment is maintained in the mill.
- ◆ If the corrections to the motor were not made to the alignment of the motor during this outage, SOS strongly recommends that the corrections be performed during the next outage to help reduce the wear being experienced on the front bearing.



- (1) NO SCALE INTENDED.
- (2) DATA INDICATES THE COMPONENT'S TENDING SIDE POSITION RELATIVE TO ITS DRIVE SIDE. THE DRIVE SIDE IS CONSIDERED THE "ZERO" REFERENCE (.000 +)
- (3) DATA IN BLUE INDICATES THE COMPONENT'S POSITION AS INSPECTED.
- (4) DATA IN RED INDICATES THE COMPONENT'S POSITION AFTER ADJUSTMENTS.

**STRAIGHTLINE OPTICAL SERVICE**

SOS FILE NO.  
GA99999A  
DATE: 9/9/99  
DRAWN BY: CCA

ALUMINUM MILL SAMPLE REPORT  
CUMMING, GEORGIA  
ALUMINUM MILL